



**San Bernardino
County Museum
Association**

making lasting connections

I/We would like to support the San Bernardino County Museum's Capital Campaign with a gift of

\$ _____

Please indicate the exhibit(s) of interest: _____

Please print the name you wish to have listed in any recognition:

This gift is anonymous. I do not wish to have my name included in donor listings.

Name: _____

Company (if applicable): _____

Address: _____

City: _____

State: _____ Zip: _____

Day Phone: _____ E-mail Address: _____

PAYMENT INFORMATION:

I/We wish to make my contribution now.

I/We wish to complete this contribution through a pledge payable over:

One year Two years Three years

Please bill me: Quarterly Semi-Annually Annually

Enclosed is my check for \$ _____ payable to SBCMA

Please charge my: Visa MasterCard

Account Number: _____ Expiration Date: _____

Signature: _____

Please, use this credit card for future billing.

Your contributions are tax-deductible as allowed by law.

San Bernardino County Museum Association Federal Tax ID number 95-6095688

Naming and sponsorship opportunities allow individuals, families, corporations, and philanthropic foundations to be recognized in the name of the donor, or in memory and tribute to someone other than the donor. Donors of in-kind gifts or materials, labor and services will be recognized separately in a prominent display. The San Bernardino County Museum Association (SBCMA) Board of Directors and Campaign Partners will be pleased to discuss variations of these and other gift opportunities with any interested persons. The wishes of donors who do not want to be recognized publicly will be respected. The SBCMA Board of Directors and San Bernardino County reserves the right to fully and finally approve all aspects relating to the acceptance, use, recognition or other elements relating to any donation to the San Bernardino County Museum Association.

Please mail this form to:
San Bernardino County Museum Association
Development Office
2024 Orange Tree Lane
Redlands, CA 92374

Thank you for your support.



I imagine you are frequently called upon to make significant gifts, but I want to bring to your attention a truly unique opportunity. Rarely is an addition made to our region that promises to make such a profound change to the image of our community. With this in mind, the Board of Directors of the San Bernardino County Museum Association invites you to participate in an exceptional opportunity – one that you will not want to miss – transforming the Museum into a preferred destination in Southern California

The San Bernardino County Museum Association, a non-profit 501(c)(3) organization, has caught the vision of the Museum's Director, Robert McKernan, along with his curators and other staff, to create a museum that will become a premier attraction for the Inland Empire. It will considerably enhance the image of our region, while providing educational and research excellence.

The construction of the Hall of Geological Wonders is underway. The San Bernardino County Board of Supervisors supports the vision for the Museum and has already secured funding for the construction of the new 12,000 square foot, three-story Hall. In addition, the San Bernardino County Museum Association has taken the lead in the capital campaign to furnish the Hall with outstanding exhibits, and that's where we need your help.

The "Footprints in Time" campaign provides you with the opportunity to leave your footprints in the Inland Empire through a gift to the Museum. We appreciate your time in reviewing these materials, and your consideration of this opportunity.

Kind regards,

A handwritten signature in black ink that reads "Susan E. Summers". The signature is written in a cursive style with a large, stylized initial "S".

Susan Summers
President
San Bernardino County Museum Association

THE SAN BERNARDINO COUNTY MUSEUM is at a crossroads, poised to transform itself from a fine, regional museum into the gem of the Inland Empire.



The Museum plays a regional role as an educational institution, a community organization, a provider of leisure services, and as part of the tourism industry. Now, with the addition of the national-quality Hall of Geological Wonders, we anticipate the re-birth of this institution as the premier museum of inland California—a destination for both visitors and researchers.

The San Bernardino County Museum currently serves over 100,000 visitors per year. The Museum provides

distinctive educational services to students throughout the inland region. An average of forty classroom visits occur monthly, providing cultural, historical and scientific exposure to many children who would never have the opportunity to experience the objects and ideas presented. Students learn, through the process of scientific discovery, and are encouraged to make connections to their own lives by comparing, analyzing, estimating, and inferring.

Monthly Family Day events encourage families to join together in learning activities for all ages. This rich supplement to their regular classroom curriculum exposes children to the world around us. Scouts and their leaders visit the Museum each year to work on geology, biology or cultural badges. These museum experiences often create life-long interests and even careers, in these fields.

The Museum currently conserves more than two million objects in its collections, and administers six historic sites throughout the county.

The Geological Sciences Division of the Museum includes nationally recognized vertebrate paleontologists and geologists. Federal agencies, including the National Park Service and the Bureau of Land Management, have recognized the unique combination of abilities and resources of the staff in terms of high-level research on fossil specimens and geologic environments. Their role, in protecting natural history collections, has been recognized by the Society for the Protection of Natural History Collections, at whose recent annual meeting the SBCM staff members represented the only museum in the nation invited to speak about preserving fossils on Federal Lands.



The opportunity for expanding the quality and scope of the Museum is ripe, given the talents of its director, curators, and staff. The new Hall of Geological Wonders, now under construction, will engage visitors in an exploration of our southwest, by using objects from the collections to show how cultural and natural history relate to our past and inform our future. The new Hall of Geological Wonders will make its mark, leaving our footprints in time.

Call Robert McKernan at (909) 307-8427, to discover more about how you can become involved in this exciting project—and leave your footprints in time.



It's all about people – of all ages and backgrounds – enriching their exploration of our region and our world. This common commitment is why Automobile Club of Southern California, in partnership with local leaders, has joined the campaign to make the Museum's expansion a reality.

We want to provide the best for our employees, customers, tourists, friends and families, here in the inland region, and the new Hall of Geological Wonders promises to be spectacular.

Join us in leaving your mark for the future by making a major contribution.

Thomas V. McKernan
Chief Executive Officer of the Automobile Club of Southern California and
Honorary Chairman, San Bernardino County Museum Capital Campaign Committee

For those of us who have been involved with the San Bernardino County Museum, the construction of the Hall of Geological Wonders is a dream come true. As a participant in securing the necessary funds for its completion, I feel it is a wonderful opportunity to be part of the on-going history of this museum's role in the life of San Bernardino County.

Shirley Harry
Chairman, San Bernardino County Museum Advisory Commission





PARTNERS FOR FOOTPRINTS IN TIME

The Footprints in Time campaign is a collaborative effort that has drawn upon the expertise, leadership, and generosity of many people and organizations.

CAPITAL CAMPAIGN

HONORARY CHAIRMAN

Thomas V. McKernan, CEO
Automobile Club of Southern California

SAN BERNARDINO COUNTY MUSEUM ASSOCIATION

BOARD OF DIRECTORS

Susan Summers, President
Patrick Garcia, Vice-president
John Thornes, Past-president
Robert Christman, Treasurer
Johnnie Ann Ralph, Secretary
Clara Mae Clem, at large
Alan Marks, at large
Lyn Greene
Allan Griesemer
Nick Karahalios
Jerry Linkhart
Dean McVay
Jeannie Minnerly
Robert Olin
James Ramos
Jim Sullivan
Harold Hill, emeritus

SAN BERNARDINO COUNTY MUSEUM ADVISORY COMMISSION

Shirley Harry, Chairman
Jo Dutton, Vice Chairman
Patricia K. O'Reilly
Peter Allan
Joan Dotson
Gary Shockey
Dorothy Grier
Judy Roberts
Clara Coleman

SAN BERNARDINO COUNTY MUSEUM

Robert L. McKernan, Director

DIVISION STAFF

Kathleen Springer, Senior Curator, Geological Sciences
Gerald Braden, Research Biologist
Andrea Morics, Registrar
Michele Nielsen, Curator of History
Jolene Redvale, Curator of Education
Chris Sagebiel, Curator of Geology
Adella Schroth, Curator of Anthropology
Eric Scott, Curator of Paleontology
Carey Smith, Exhibits Specialist

Facts Sheet

Groundbreaking for the Hall of Geological Wonders: Thursday, February 8, 2007

Projected building completion date: Spring 2008

Projected completion of exhibits and opening date: Spring 2009

Size: 12,000 square feet in three floors of exhibit space, plus exterior exhibits

Cost: Building-\$6.7 million; Exhibits-\$5 million

Lower Level

Geo Lab

Journey to the Center of the Earth

Mineral Library

Regional Minerals

Fluorescent Minerals, Magma Chamber and Pegmatites

Earth's Test Kitchen

Meteorites and Extraterrestrial Geology



Main Floor

Introduction and Time Tube

Life to Death to Discovery

The Research Lab

Plate Tectonics

State of California/The San Andreas Fault Projection System

Deep Time and Early Life

The Paleozoic – Adaptations and Innovations

Dinosaur Trackways

Barstow: It's About Time!

The Petrified Forest

The Tree of Life



Upper Level

Earthquake Science

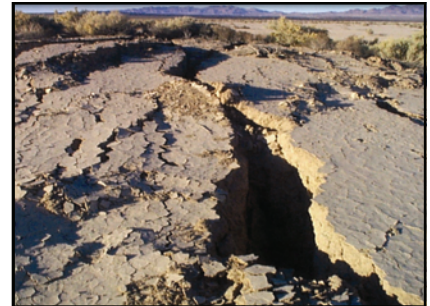
The Earthquake Experience

Regional Geology

The Cave

Dinos to Birds

Teratorn – Birds in Flight

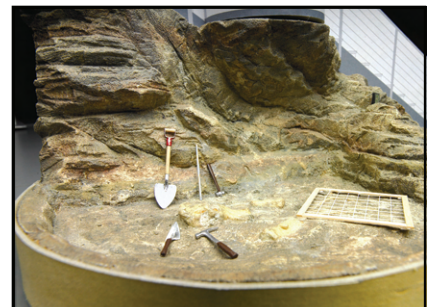


Exterior

The Dig Site

The Dirt Lab

Amphitheater



“The Museum is the front porch of the region. You’ll not only be able to see what existed in our area thousands to millions of years ago, but will also be able to follow a geological time-path to the present.”

Robert McKernan

San Bernardino County Museum Director

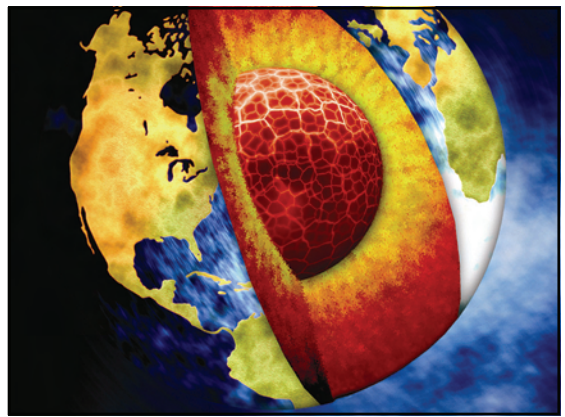
Naming and Sponsorship Opportunities

The Hall of Geological Wonders

The San Bernardino County Museum Association, a non-profit 501(c)(3), offers a number of sponsorship opportunities. Each is designed to express our thanks for your support of the Museum.

\$1,000,000

- Exclusive naming rights to one of the following:
 - The Grand Hall (main level)
 - Journey to the Center of the Earth (lower level)
- Inclusion in all promotional media
- Complimentary tickets and recognition at the Grand Opening Gala Dinner
- VIP passes to the Grand Opening
- Recognition at all capital campaign events
- Presence on the San Bernardino County Museum website
- Prominent acknowledgement on the Museum's Donor Wall
- Recognition on lobby plasma screen
- Honorary life-time membership in the Museum Association, with exclusive museum access
- *And More*



Naming and sponsorship opportunities allow individuals, families, corporations, and philanthropic foundations to be recognized in the name of the donor, or in memory and tribute to someone other than the donor. Donors of in-kind gifts or materials, labor and services will be recognized separately in a prominent display.

The San Bernardino County Museum Association (SBCMA) Board of Directors and Campaign Partners will be pleased to discuss variations of these and other gift opportunities with any interested persons. The wishes of donors who do not want to be recognized publicly will be respected.

The SBCMA Board of Directors and San Bernardino County reserves the right to fully and finally approve all aspects relating to the acceptance, use, recognition or other elements relating to any donation to the San Bernardino County Museum Association.

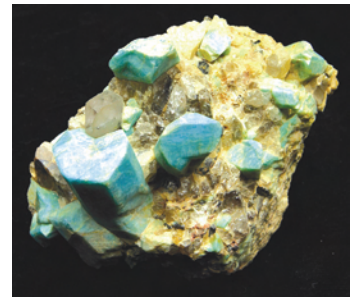
\$500,000

- Exclusive naming rights to one of the following:
 - Life to Death to Discovery
 - Geo Lab
 - Earth's Test Kitchen
 - The Mezzanine (upper level)
 - Amphitheater
- Inclusion in all promotional media
- Complimentary tickets and recognition at the Grand Opening Gala Dinner
- VIP passes to the Grand Opening
- Recognition at all capital campaign events
- Presence on the San Bernardino County Museum website
- Acknowledgement on the Museum's Donor Wall
- Recognition on lobby plasma screen
- Honorary life-time membership in the Museum Association with exclusive museum access
- *And more*



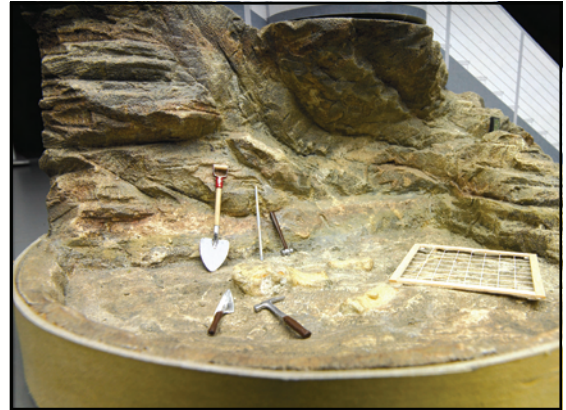
\$250,000

- Sponsorship rights to the following:
 - Regional Geology
 - Dinos to Birds
 - Deep Time and Early Life Theater
- Inclusion in all promotional media
- Complimentary tickets and recognition at the Grand Opening Gala Dinner
- VIP passes to the Grand Opening
- Recognition at all capital campaign events
- Presence on the San Bernardino County Museum website
- Acknowledgement on the Museum's Donor Wall
- Recognition on lobby plasma screen
- Honorary life-time membership in the Museum Association with exclusive museum access
- *And more*



\$150,000

- Sponsorship rights to one of the following:
 - State of California/San Andreas Fault Projection System
 - The Dig Site
 - Mineral Library
 - Regional Minerals
- Inclusion in all promotional media
- Complimentary tickets and recognition at the Grand Opening Gala Dinner
- VIP passes to the Grand Opening
- Recognition at all capital campaign events
- Presence on the San Bernardino County Museum website
- Acknowledgement on the donor wall
- Recognition on lobby plasma screen
- Honorary life-time membership in the Museum Association with exclusive museum access
- *And more*



\$100,000

- Sponsorship rights to one of the following:
 - Plate Tectonics
 - Dinosaur Trackways
 - The Paleozoic Adaptations and Innovations
 - The Earthquake Experience
 - The Cave
 - A Journey to the Core
 - Barstow: It's About Time!
- Complimentary tickets and recognition at the Grand Opening Gala Dinner
- VIP passes to the Grand Opening
- Inclusion in all promotional media
- Presence on the San Bernardino County Museum website
- Acknowledgement on the donor wall
- Recognition on lobby plasma screen
- Honorary life-time membership in the Museum Association with exclusive museum access
- *And more*



\$50,000

- Sponsorship of one of the following:
 - Introduction and Time Tube
 - The Tree of Life
 - The Petrified Forest
 - Fluorescent Minerals, Magma Chamber and Pegmatites
 - The Research Lab
 - The Dirt Lab
- Inclusion in promotional pieces
- Complimentary tickets and recognition at the Grand Opening Gala Dinner
- VIP passes to the Grand Opening
- Presence on the San Bernardino County Museum website
- Acknowledgement on the donor wall
- Recognition on lobby plasma screen
- Museum Association membership



\$25,000

- Sponsorship of one of the following:
 - Earthquake Science
 - Teratorn – Birds in Flight
 - Meteorites and Extraterrestrial Geology
- Inclusion in promotional media
- Complimentary tickets and recognition at the Grand Opening Gala Dinner
- VIP passes to the Grand Opening
- Presence on the San Bernardino County Museum website
- Acknowledgement on the donor wall
- Recognition on lobby plasma screen
- Museum Association membership



Gift Opportunities

\$10,000

- Complimentary tickets to and recognition at the Grand Opening Gala Dinner
- VIP passes to the Grand Opening
- Presence on the San Bernardino County Museum website
- Acknowledgement on the donor wall
- Recognition on lobby plasma screen
- Museum Association membership

\$5,000

- VIP passes to the Grand Opening
- Acknowledgement on the donor wall
- Presence on the San Bernardino County Museum website
- Recognition on lobby plasma screen
- Museum Association membership